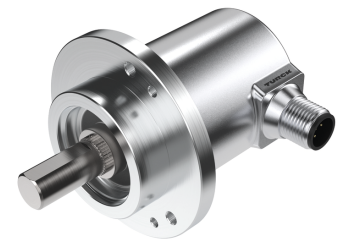
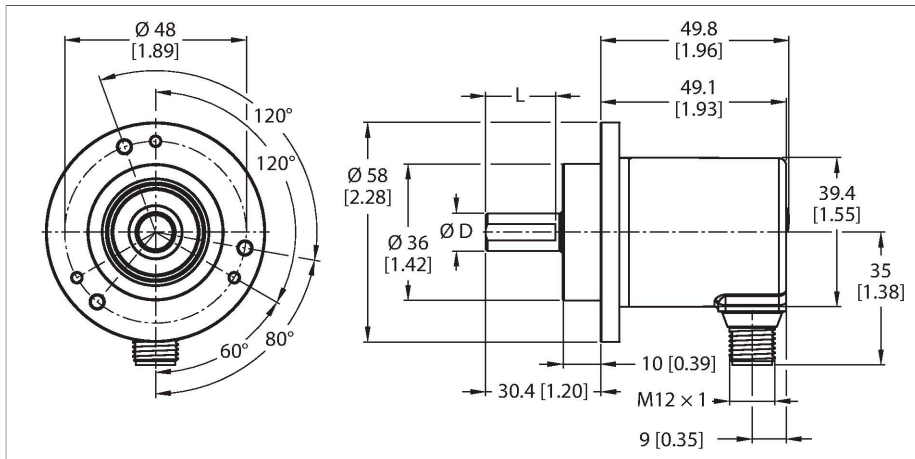


REM-E-195T10C-IOL32B-H1141

Absolute Rotary Encoder - Multiturn – IO-Link Efficiency Line



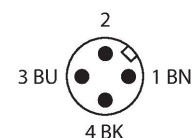
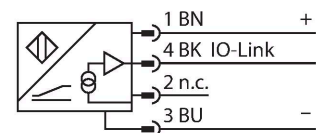
Technical data

Type	REM-E-195T10C-IOL32B-H1141
ID	100021186
Measuring principle	Magnetic
General data	
Max. Rotational Speed	4000 rpm
Repetition accuracy	$\pm 0.2^\circ$
Absolute accuracy	$\pm 0.5^\circ$
Output type	Absolute multiturn
Electrical data	
Operating voltage	18...30 VDC
No-load current	30 mA
Short-circuit protection	yes
Wire breakage/Reverse polarity protection	yes
Communication protocol	IO-Link
IO-Link	
IO-Link specification	V 1.1
Programming	FDT/DTM
Mechanical data	
Design	Solid shaft
Flange type	Clamping flange
Flange diameter	$\varnothing 58$ mm
Shaft Type	Solid shaft
Shaft diameter D [mm]	10
Shaft Length L [mm]	20
Shaft material	Stainless steel

Features

- Clamping flange, $\varnothing 58$ mm
- Solid shaft, $\varnothing 10$ mm \times 20 mm
- Magnetic measuring principle
- Shaft material: stainless steel
- Protection class IP64 on housing and shaft side
- -20...+70 °C
- Max. 4000 rpm (continuous operation 2000 rpm)
- Energy harvesting technology
- 18...30 VDC
- M12 \times 1 male connector, 4-pin
- Singleturn resolution 14 bit scalable, default 14 bit
- Multiturn resolution scalable only to 18 bits over total resolution, default 18 bits
- Total resolution 32 bit scalable, default 32 bit

Wiring diagram



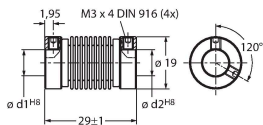
Technical data

Housing material	Die-cast zinc
Electrical connection	Connector, M12 × 1
	5-pin
Axial shaft load	40 N
Radial shaft load	80 N
Environmental conditions	
Ambient temperature	-20...+70 °C
Vibration resistance (EN 60068-2-6)	30 g (300 m/s ²), 10...2000 Hz
Shock resistance (EN 60068-2-27)	500 g (2500 m/s ²), 4 ms
Protection class	IP64
Protection class shaft	IP64
MTTF	25 years

Accessories

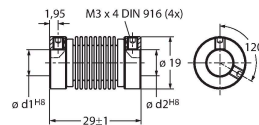
RCS-19-10-08 1545357

Bellows coupling, outer diameter:
19 mm, bore diameter: 10 mm/8 mm



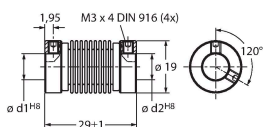
RCS-19-10-10 1545356

Bellows coupling, outer diameter:
19 mm, bore diameter: 10 mm/10 mm



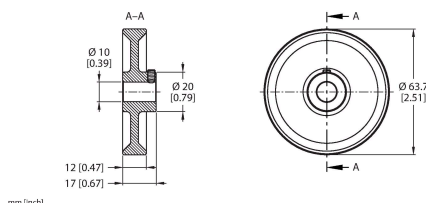
RCS-19-10-06 1545358

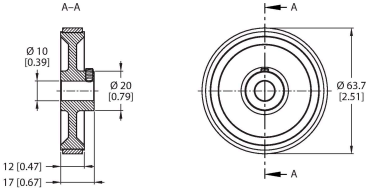
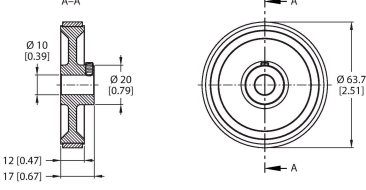
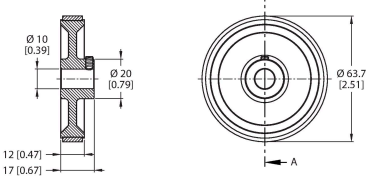
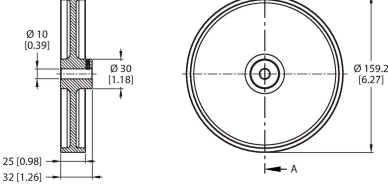
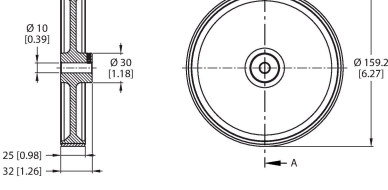
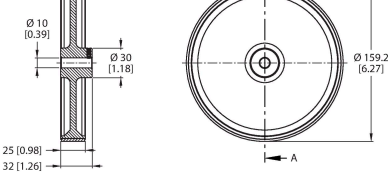
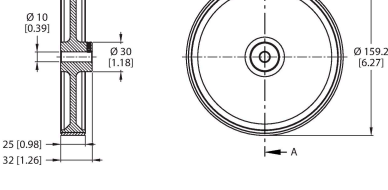
Bellows coupling, outer diameter:
19 mm, bore diameter: 10 mm/6 mm



Accessories

Dimension drawing	Type	ID	
	RA-MW-200-12-DK1-10	100038302	Aluminum measuring wheel (cross knurled) for encoders; circumference 0.2 m, width 12 mm, D = 10 mm



Dimension drawing	Type	ID	
	RA-MW-200-12-PS1-10	100038303	Aluminum measuring wheel (smooth PU) for encoders; circumference 0.2 m, width 12 mm, D = 10 mm
	RA-MW-200-12-RT1-10	100038304	Aluminum measuring wheel (studded PU) for encoders; circumference 0.2 m, width 12 mm, D = 10 mm
	RA-MW-200-12-PC1-10	100038305	Aluminum measuring wheel (grooved PU) for encoders; circumference 0.2 m, width 12 mm, D = 10 mm
	RA-MW-500-25-DK1-10	100038314	Aluminum measuring wheel (cross knurled) for encoders; circumference 0.5 m, width 25 mm, D = 10 mm
	RA-MW-500-25-PS1-10	100038315	Aluminum measuring wheel (smooth PU) for encoders; circumference 0.5 m, width 25 mm, D = 10 mm
	RA-MW-500-25-RT1-10	100038316	Aluminum measuring wheel (studded PU) for encoders; circumference 0.5 m, width 25 mm, D = 10 mm
	RA-MW-500-25-PC1-10	100038317	Aluminum measuring wheel (grooved PU) for encoders; circumference 0.5 m, width 25 mm, D = 10 mm

Dimension drawing	Type	ID	
	RA-MW-300-12-DK1-10	100038306	Aluminum measuring wheel (cross knurled) for encoders; circumference 0.3 m, width 12 mm, D = 10 mm
	RA-MW-300-12-PS1-10	100038307	Aluminum measuring wheel (smooth PU) for encoders; circumference 0.3 m, width 12 mm, D = 10 mm
	RA-MW-300-12-RT1-10	100038308	Aluminum measuring wheel (studded PU) for encoders; circumference 0.3 m, width 12 mm, D = 10 mm
	RA-MW-300-12-PC1-10	100038309	Aluminum measuring wheel (grooved PU) for encoders; circumference 0.3 m, width 12 mm, D = 10 mm
	RA-SAB-15-36	100038251	Spring arm for encoders with a 58-mm flange; recommended contact pressure 15 N; maximum contact pressure 30 N
	RA-SAB-30-36	100038294	Spring arm for encoders with a 58-mm flange; recommended contact pressure 30 N; maximum contact pressure 40 N