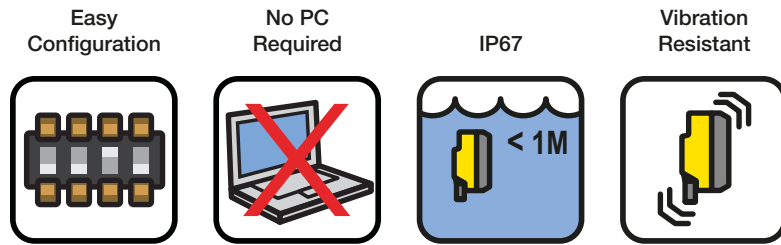
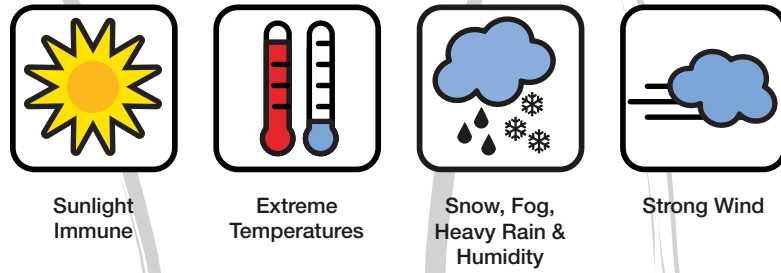


R-GAGE Radar Sensor

FMCW (True-Presence) Radar Detection - Detects Stationary and Moving Targets



All-Weather Outdoor Applications



Ease of installation
No PC required

Plug and play after
simple DIP-switch
configuration

Maintenance-
free

24 GHz Frequency
Modulated Continuous
Wave Radar Technology



**Crane Collision
Avoidance**



**Entry/Exit, Gate
& Drive Thru**



**Vehicle
Detection**



Truck Detection



Train Detection





QT50R-AFHQ

Standard Wide Angle

- Adjustable sensing field
- Detects objects up to 24 m
- One single detection zone
- Total beam angle 90° (± 45)

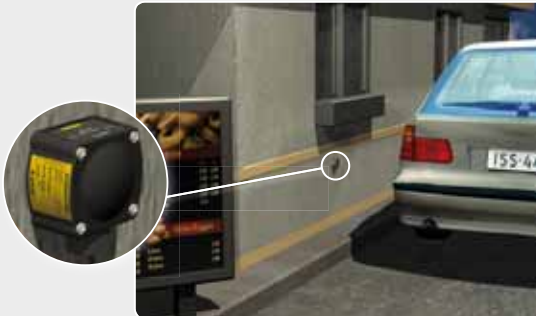
Adjustable field – 12-30 VDC, Bipolar NPN/PNP, DIP-switch-selectable N.O. or N.C.

Models	Connection
QT50R-EU-AFHQ	5-pin M12 quick-disconnect
QT50R-UK-AFHQ	5-pin M12 quick-disconnect
QT50R-US-AFHQ	5-pin M12 quick-disconnect
QT50R-EU-AFSQ	Short range model

For 5-wire 2 m integral cable versions, remove suffix "Q" from the model number (e.g. QT50R-xx-AFH).

Typical Applications

- Traffic monitoring and logistics
- Cars in turn lanes, entry/exit gates
- Boats on waterways, locks, and dams
- Parked cars on city streets
- Light rail and subways



QT50R-AF2WQ

Dual-Zone Narrow-Beam

- Adjustable sensing field with detection up to 24 m
- Two independent adjustable sensing zones
- Total beam angle 20° (± 10)

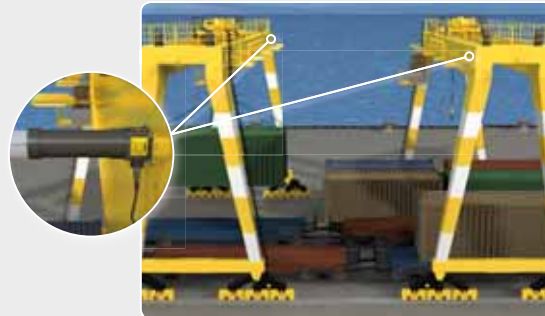
Narrow-Beam – 12-30 VDC, DIP-switch-selectable NPN or PNP and N.O. or N.C.

Models	Connection
QT50R-EU-AF2WQ	5-pin M12 quick-disconnect
QT50R-UK-AF2WQ	5-pin M12 quick-disconnect
QT50R-US-AF2WQ	5-pin M12 quick-disconnect

For 5-wire 2 m integral cable versions, remove suffix "Q" from the model number (e.g. QT50R-xx-AF2W).

Typical Applications

- Crane to Crane proximity detection
- OEM and Retro-Fit of existing cranes
- Overhead crane in dusty or harsh environments



Q120RA-AF2Q

Long Range, High Sensitivity

- Two independent adjustable sensing zones, detects objects up to 40 m
- Narrow total beam pattern: horizontal: 20° (± 10), vertical: 50° (± 25)
- 3x more sensitive than standard model

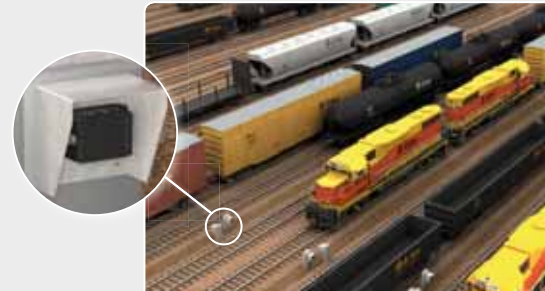
Narrow-Beam – 12-30 VDC, DIP-switch-selectable NPN or PNP; N.O. or N.C.

Models	Connection
Q120RA-EU-AF2Q	5-pin M12 quick-disconnect
Q120RA-UK-AF2Q	5-pin M12 quick-disconnect
Q120RA-US-AF2Q	5-pin M12 quick-disconnect
Q120RA-XX-AFQ	Shorter range single zone

For 5-wire 2 m integral cable versions, remove suffix "Q" from the model number (e.g. Q120RA-xx-AF2).

Typical Applications

- Collision avoidance: RTG, RMG, STS, AGV, Reach Stackers, and overhead cranes in warehouses
- Train detection including flatbeds
- Boats on waterways, locks, and dams
- Shipyard logistics



QT50R-RHQ

Retroreflective

- Use of retroreflective target enables reliable detection of weak targets in the foreground
- Detects objects up to 12 m
- Effective beam angle equals size of retro target

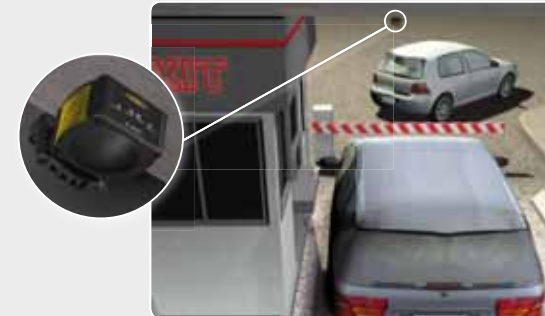
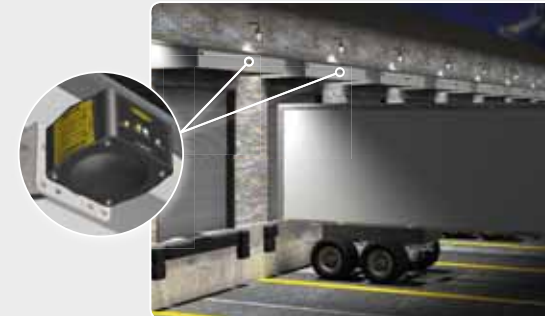
Retroreflective – 12-30 VDC, Bipolar NPN/PNP; DIP-switch-selectable N.O. or N.C.

Models	Connection
QT50R-EU-RHQ	5-pin M12 quick-disconnect
QT50R-UK-RHQ	5-pin M12 quick-disconnect
QT50R-US-RHQ	5-pin M12 quick-disconnect

For 5-wire 2 m integral cable versions, remove suffix "Q" from the model number (e.g. QT50R-xx-RH).

Typical Applications

- Loading docks, enter/exit gates, parking ramps, car counting
- Gas station overhead car detection
- Bank drive thru, fast food drive thru



Accessories

Models	Description
 SMBWSQ120	<ul style="list-style-type: none"> • Heavy-duty, rear-mount protective metal enclosure for use with Q120RA model • Supports both horizontal and vertical sensor mounting • 16-gauge 304 stainless steel • Keeps rain and ice off the face of the sensor
 BRTR-CC20E	<ul style="list-style-type: none"> • Retroreflective target for use with QT50R retroreflective model • Large corner-cube reflector in protective plastic enclosure
 QT50RCK	<ul style="list-style-type: none"> • Weather deflector • Small hood keeps rain and ice off the face of the sensor • Includes mounting hardware
 SMB30SC	<ul style="list-style-type: none"> • Split clamp with swivel bracket with 30 mm mounting hole for sensor • Black reinforced thermoplastic polyester • Stainless steel mounting hardware included
 SMB30MM	<ul style="list-style-type: none"> • 12-gauge stainless steel bracket with curved mounting slots for versatile orientation • Mounting hole for 30 mm sensor

Note: Sensor face must be kept free of heavy water and ice build-up.



Banner offers a full range of sensing solutions

www.bannerengineering.com/eu

